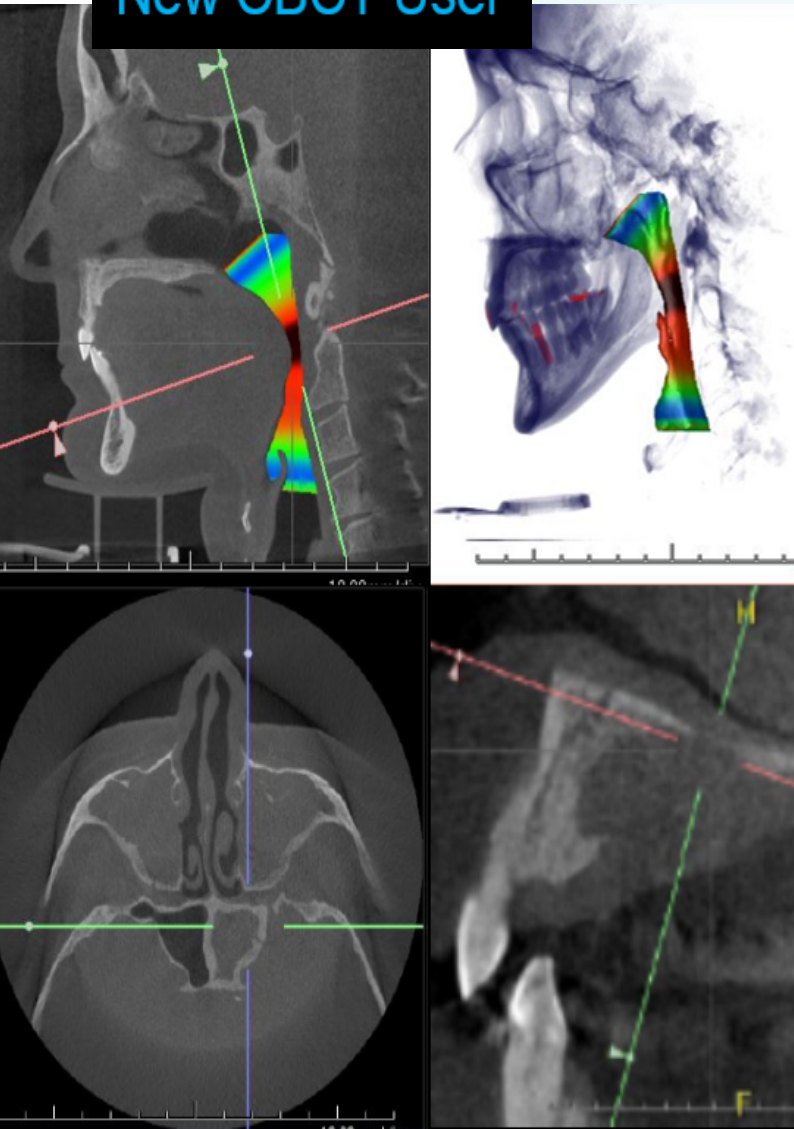


CBCT Interpretation Education

New CBCT User



Lecture 1- Applications. CBCT Applications for everyday dentistry – Implant planning, Endo, Airway, Surgical Guide Fabrication

Lecture 2- Anatomy. Review of anatomy including variations of normal anatomy for implant planning

Lecture 3- Sinus Pathology. Maxillary Sinus. Case based learning to distinguish normal anatomy; Sinusitis; Benign lesions; Malignancy

Lecture 4- Jaws. Case based learning to identify normal anatomy and common pathology, including systemic diseases of bone and Medication related Osteonecrosis of the jaw

Lecture 5- Benign vs. Malignant. Review radiographic features of benign lesions, features of jaw infections and malignancy. Case based learning.

Lecture 6- FAQs. CBCT Physics, FOVs, Artifacts, Selection criteria, Liability, Radiation Dose

Lecture 7- Software Tips & Tricks. Review of essential software features to navigate CBCT scans, tips to draw/ find mandibular canal, implant work-up.

Lecture 8- Case Review. Anonymized CBCT scans used to share a structured method followed by a radiologist to read CBCT scan and prepare a radiology report

8
CE
CREDITS

+



Discounted CBCT Interpretation

4 CBCT Reports for \$100.00 for New Users of

Prexion 3D Excelsior Pro

Prexion 3D Explorer